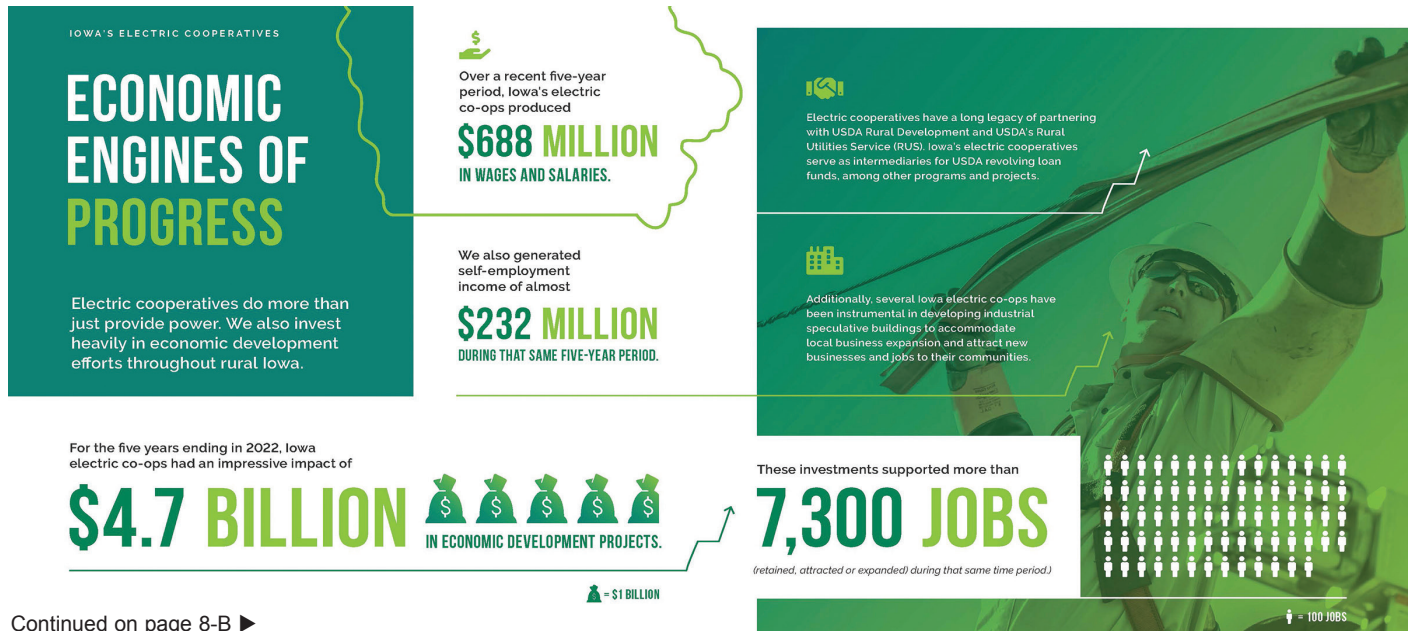


Powering Lives, Empowering Communities: The Impact of Iowa's Electric Cooperatives

Economic Engines of Progress

Electric cooperatives do more than just provide power. We also invest heavily in economic development efforts throughout rural Iowa.

For the five years ending in 2022, Iowa electric co-ops had an impressive impact of \$4.7 billion in economic development



Continued on page 8-B ►

WIN

ONE OF TWO MONTHLY \$5 BILL CREDITS

THIS MONTH'S CONTEST:

Submit your answers to the word scramble on page 8-B. The answers will be published in the February newsletter.

◆ ◆ ◆

Winners for the month of November:
Steve Pelz, Cambridge
Nancy Sorenson, Ankeny

Here's how to enter:

1. Answer the question or challenge posed each month.
2. Send answers to Consumers Energy with:
 - Name
 - Service Address
 - Account Number
 - Phone Number
 - Email Address

Submit via email or mail:
Email to: kglenney@consumersenergy.coop
Subject line: Contest

Mail to: Consumers Energy
Attn: Contest
2074 242nd Street
Marshalltown, IA 50158

3. Winners' names will be drawn at random and published in upcoming issues of *The Connection*.

January 2025

Dates To Remember:

JANUARY

- 1 Office Closed - Observe New Year's Holiday
- 2 Read Meters
- 3 Bills Due
- 3 Automatic Payments Deducted
- 10 Email / Mail Bills
- 27 Automatic Payments Deducted
- 31 Read Meters

FEBRUARY

- 3 Bills Due
- 3 Automatic Payments Deducted

Powering Lives, Empowering Communities *(continued)*

projects. These investments supported more than 7,300 jobs (retained, attracted, or expanded) during that same time period.

Over a recent 5-year period, Iowa's electric cooperatives produced \$688 million in wages and salaries. We also generated self-employment income of almost \$232 million during that same time span.

Electric cooperatives have a long legacy of partnering with USDA Rural Development and USDA's Rural Utilities Service (RUS). Iowa's electric co-ops are proud to serve as intermediaries for USDA revolving loan funds (RLF), among other programs and projects. Over the decades, Consumers Energy has been participating in the RLF program and has helped many businesses such as childcare centers, medical clinics, grocery stores, restaurants, and industrial facilities.

Additionally, several Iowa electric co-ops have been instrumental in developing industrial speculative buildings to accommodate local business expansion and attract new businesses and jobs to their communities.

Investing in economic development is one important way Consumers Energy proudly supports the local communities we serve.



Bridget Itzen,
CEO/General Manager

January is National Bath Safety Month

National Bath Safety Month serves as a reminder to practice bath safety.

UNSCRAMBLE THE WORDS IN THE SENTENCES BELOW TO REVEAL IMPORTANT BATH SAFETY TIPS.

ENTER THE MONTHLY NEWSLETTER CONTEST BY SENDING IN YOUR ANSWERS! CONTEST DETAILS ARE ON PAGE 8-A.

- 1 Ensure **rdunog** fault circuit interrupters (GFCIs) are installed and working properly.
- 2 Use all electrical **ppeicanals** away from the sink, tub, toilet, and shower. Electricity and water are a deadly combination.
- 3 Do not extend a cord's reach to use a cell **ephno** or other device near the tub or shower.
- 4 Do not plug too many things into an **oteutl** or circuit.
- 5 Ensure **hitlg** fixtures in the shower are covered and exhaust fans are free from lint, dirt, and grime.
- 6 Water **sthreea** should be set at 120°F so hot water does not cause severe burns.

GAIL HULL

EMPLOYEE SPOTLIGHT



JOB: MEMBER SERVICES/HR MANAGER



DREAM VACATION: AUSTRALIA & THE FIJI ISLANDS



FAVE MOVIES: PRETTY WOMAN; BACK TO THE FUTURE SERIES; CHRISTMAS VACATION



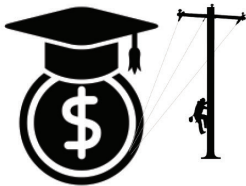
FAVE BANDS/PERFORMERS: LOVE A VARIETY, BUT FAVES ARE EAGLES, AEROSMITH, & GEORGE STRAIT



FAVE BOOKS: ROMANCE NOVELS & A FAVE AUTHOR IS COLLEEN HOOVER



OTHER FAVE: TRUE CRIME - GAIL SAYS SHE IS A TRUE CRIME JUNKIE!



Lineworker Scholarship

Are you pursuing a career in the powerline industry?

Consumers Energy offers a \$1,000 scholarship to residents of the state of Iowa for this type of education in the electric industry!



SCAN HERE TO VISIT WEBSITE FOR MORE INFO OR TO APPLY!

**DEADLINE TO APPLY:
MARCH 14, 2025**

For more information or hard copies of applications, contact Billing and Education Program Coordinator, Tami Kerwood, at 800-696-6552 or tkerwood@consumersenergy.coop.

Stay Safe on Winter Roads



Winter months can bring snow, ice and windy conditions, creating hazards for drivers. It is important to be prepared in case there is an accident.



Safe
Electricity.org®

Before a winter storm

Perform seasonal maintenance on your car to ensure:

- Batteries are charged.
- Tires have sufficient tread.
- Spare tire is inflated.
- Jumper cables are in good condition.
- A winterized car emergency kit.
- Windshield wipers work.
- Headlights, brake lights and turn signals work.
- At least a half-full tank of gas.

Prevent frostbite and hypothermia

If you are stranded in your car after an accident, observe the following precautions:

- Do not stay in one position for too long.
- Stay awake.
- Do not overexert yourself to avoid strain on your heart.
- Watch for signs such as a change in skin color, numbness, shivering, slurred speech, loss of coordination or confusion.

Winter storms and power lines

Always treat sagging and downed power lines as energized and dangerous. Keep at least 50 feet away from the area.

- If your vehicle hits a power pole, stay inside.
- Contact 9-1-1 and wait for the power to be shut off by utility workers.
- If your vehicle is on fire, jump clear with feet together, avoiding contact with both the vehicle and ground simultaneously.
- Shuffle or "bunny hop" away from the vehicle, keeping feet together to prevent different electric currents through your body.
- Never drive over a downed power line, which can cause additional hazards.





Academic Scholarship

Graduating from high school in 2025?



Apply for the Consumers Energy scholarship for \$1,000 to pay toward your post secondary education!



SCAN HERE TO VISIT WEBSITE FOR MORE INFO OR TO APPLY!

**DEADLINE TO APPLY:
MARCH 14, 2025**

For more information or hard copies of applications, contact Billing and Education Program Coordinator, Tami Kerwood, at 800-696-6552 or tkerwood@consumersenergy.coop.

CHRISTMAS WORD GAME

This activity was the contest in last month's newsletter. The definitions listed were for words using only the letters in MERRY CHRISTMAS.

Here are the answers!

- | | |
|-------------------------------------|----------------------------------|
| Twelve months
Year | Water vapor
Steam |
| Alike
Same | Male sheep
Ram |
| Large town
City | A seat
Chair |
| Warmth
Heat | Our planet
Earth |
| Grows on your head
Hair | Bashful
Shy |
| Part of a flower
Stem | Holds up a sail
Mast |
| Money
Cash | Long-tailed rodent
Rat |
| Divide with someone
Share | |

Annual Pole Inspection and Treatment Program for Continued Reliable Service and Safety in 2025

Consumers Energy will have approximately 2,000 poles inspected and treated this year for the cooperative. The annual pole maintenance program will be in the Elkhart, Collins, and Melbourne areas.

Inspection crews will be performing maintenance on meter poles, transformer poles, and line poles. The treatment helps extend the life of the poles in the cooperative's system. The inspection process also determines the poles that cannot be saved with treatment. These poles are then marked by inspectors and will be replaced by Consumers Energy crews.



Youth Tour is an all-expenses-paid trip to Washington, D.C., where high school sophomores, juniors, or seniors explore monuments and museums, meet with members of Congress, and make lifelong friends with other students from all over Iowa and across the country.

You'll discover leadership lessons from our nation's history and be immersed in the cooperative spirit that built our nation ---
ALL EXPENSES PAID by Consumers Energy.

While on this FREE trip to Washington, D.C., you will:

- Sharpen leadership skills
- Tour historic sites
- Meet Iowa's members of Congress
- Make new friends
- And MUCH more!



**DEADLINE TO APPLY:
MARCH 14, 2025**

**For more information, contact Billing & Education Coordinator,
Tami Kerwood at 800-696-6552 or tkerwood@consumersenergy.coop.**

2025 REBATE PROGRAM



2074 242nd Street | Marshalltown, IA 50158
 641-752-1593 | 800-696-6552
 641-752-5738
www.consumersenergy.coop
info@consumersenergy.coop

If you purchase certain electric equipment, you may qualify for rebates from Consumers Energy!

Submitting information for your rebate is simple.

Members need to complete a form and send in copies of receipts.

This can all be done from the website or by contacting the co-op for a hard copy of the form.

Air Source Heat Pump

Any Unit \$200/ton

Appliances

Clothes Washer \$40/unit
Electric Clothes Dryer \$20/unit

Central Air Conditioning

Any Unit \$100/unit

Electric Vehicles and Vehicle/Equipment Charging Units

Level II Chargers 50% of cost (Up to \$750)

EV Ready - New Construction \$100
(240/208 VAC)

For residential applications, one rebate per membership is available.
For commercial applications, rebates are available up to four of each.

DO YOU HAVE ANY ELIGIBLE ITEMS THAT WERE
PURCHASED WITHIN THE LAST 6 MONTHS?

APPLY FOR YOUR 2024 REBATES BY JANUARY 31, 2025.

Electric Water Heating

Heat Pump Water Heater \$350/unit

Consumers Energy offers special pricing on Marathon Electric Water Heaters. Contact the co-op for more information.

Geothermal Heat Pump

New \$300/ton
Geothermal Unit Only - Existing \$100/ton



SCAN THIS QR CODE TO
ACCESS CONSUMERS
ENERGY'S REBATE PAGE.

If you have questions about Consumers Energy's Rebate Program or need a form:

call: 800-696-6552

email: info@consumersenergy.coop

visit: www.consumersenergy.coop/rebates

CONSUMERS ENERGY BOARD OF DIRECTORS

District 1 - Marshall, Jasper, & Tama Counties:
Denny Beckman
President
dbeckman@consumersenergy.coop

Bill Hobson
Director
whobson@consumersenergy.coop

Pat VonAhnen
Secretary-Treasurer
pvonahnen@consumersenergy.coop

District 2 - Story County:
Arden Greiner
Director
agreiner@consumersenergy.coop

Bob Meimann
Assistant Secretary-Treasurer
rmeimann@consumersenergy.coop

Steve Quick
Director
squick@consumersenergy.coop

District 3 - Polk County:
Craig Griffieon
Vice President
cgriffieon@consumersenergy.coop

Tony Lem
Director
alem@consumersenergy.coop

Jennifer Sease
Director
jsease@consumersenergy.coop

Energy Efficiency Cost per kWh:
\$0.000364

To report an outage, call 800-696-6552.

For the most accurate outage updates, check SmartHub or www.consumersenergy.coop for messages, the statewide outage map, or call Consumers Energy.

WAYS TO PAY YOUR CONSUMERS ENERGY BILL



Online or the app
www.consumersenergy.coop

Automatic recurring
monthly payments



In person

By phone 24/7
855-939-3832



By mail

By dropbox



2074 242nd Street | Marshalltown, IA 50158



641-752-1593 | 800-696-6552



855-939-3832



641-752-5738



www.consumersenergy.coop



info@consumersenergy.coop

OFFICE HOURS
7:30 AM - 4:00 PM
MONDAY - FRIDAY

PATRONAGE
CAPITAL
CREDITS



PATRONAGE CAPITAL CREDITS

- Funds are allocated to members based on electric usage.
- Members receive funds when the cooperative retires margins.



REBATES

- Consumers Energy offers members rebates for new electric equipment purchases and energy-efficiency upgrades.



For information on ways to pay or programs and services offered, contact the Member Services Department.